

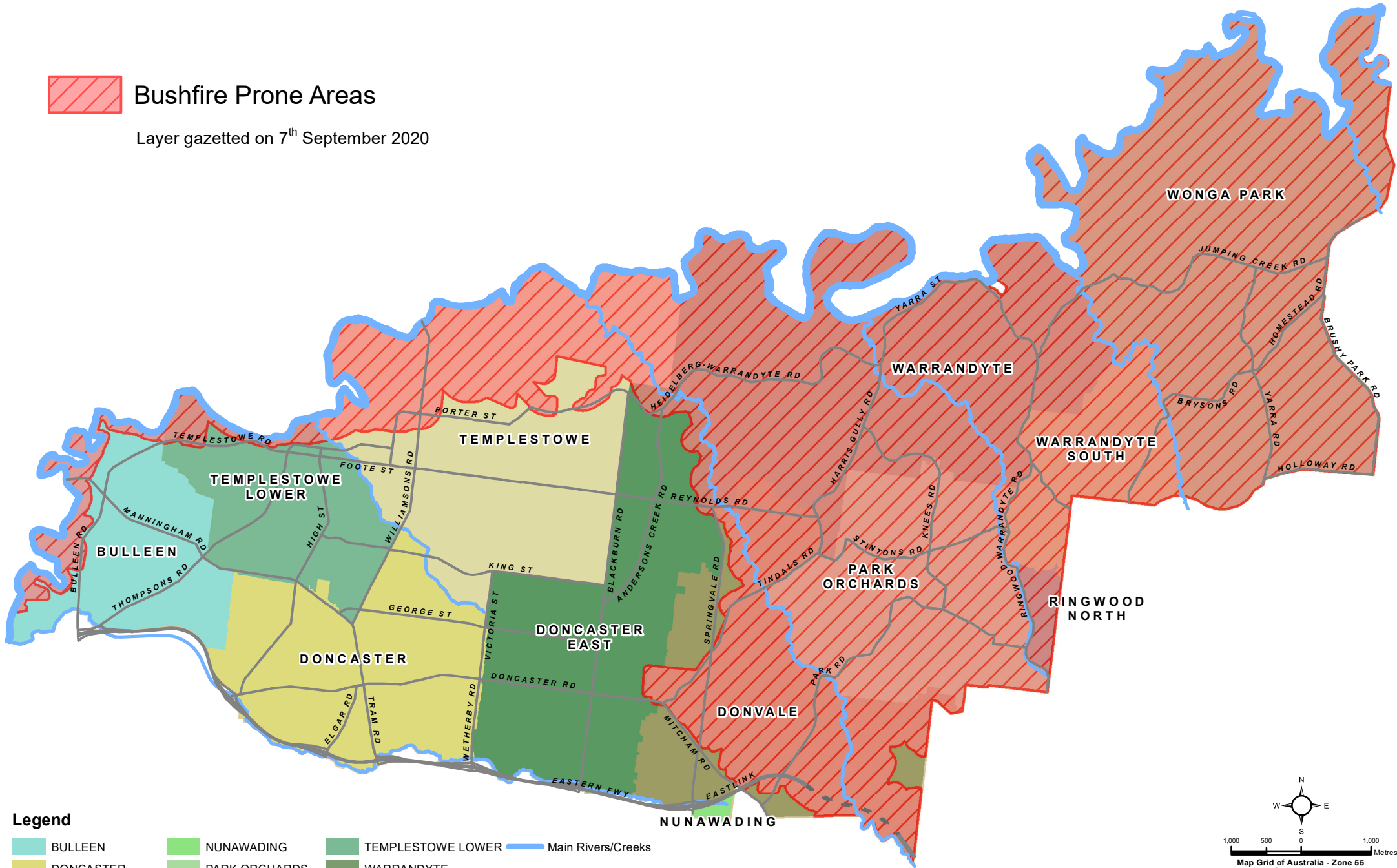


Manningham Bushfire Prone Areas



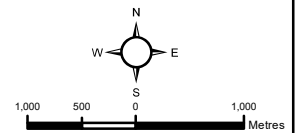
Bushfire Prone Areas

Layer gazetted on 7th September 2020



Legend

- | | | | | | | | |
|--|----------------|--|----------------|--|-------------------|--|--------------------|
| | BULLEEN | | NUNAWADING | | TEMPLESTOWE LOWER | | Main Rivers/Creeks |
| | DONCASTER | | PARK ORCHARDS | | WARRANDYTE | | |
| | DONCASTER EAST | | RINGWOOD NORTH | | WARRANDYTE SOUTH | | |
| | DONVALE | | TEMPLESTOWE | | WONGA PARK | | |



Prepared by:- MANNINGHAM GIS/GPS/3D

