

PLUMBERS FACT SHEET:

Guideline For Recycled Water and Rainwater in medium to high density developments

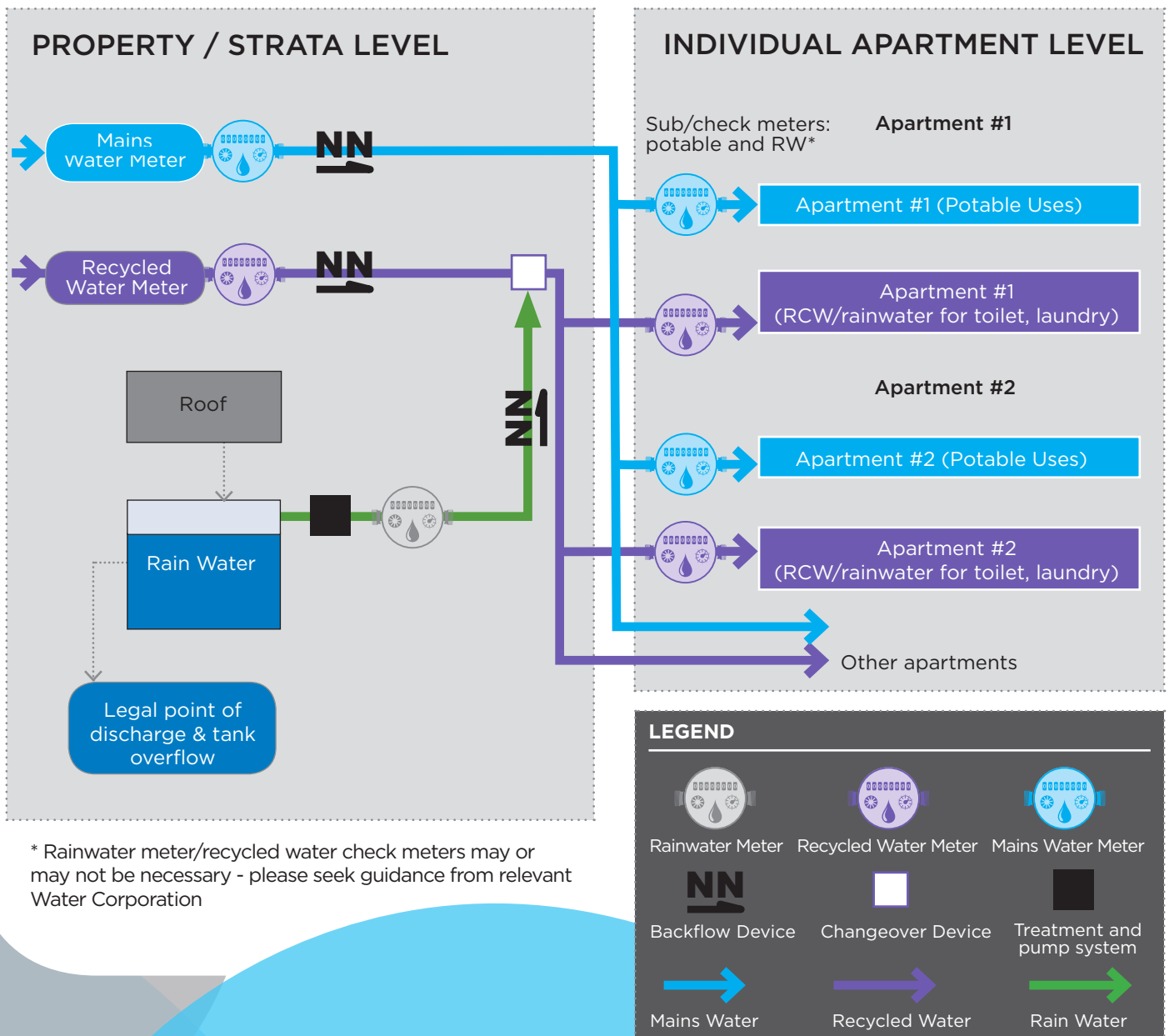
This fact sheet is for plumbers that are connecting water services in areas with BOTH a mandated recycled water connection AND a rainwater system.

All works must be approved by the water corporation and council. If in doubt refer to directions from authorities.

More detail is available in the "Guideline for Recycled Water and Rainwater in Medium to High Density Developments", and in the "Fact sheets for Consultants", and the "Fact sheet overview".

COMMON INFRASTRUCTURE

In many situations, there will be common infrastructure. Key elements of this infrastructure are shown in the figure below.

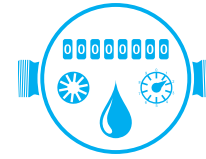


* Rainwater meter/recycled water check meters may or may not be necessary - please seek guidance from relevant Water Corporation

GUIDELINES

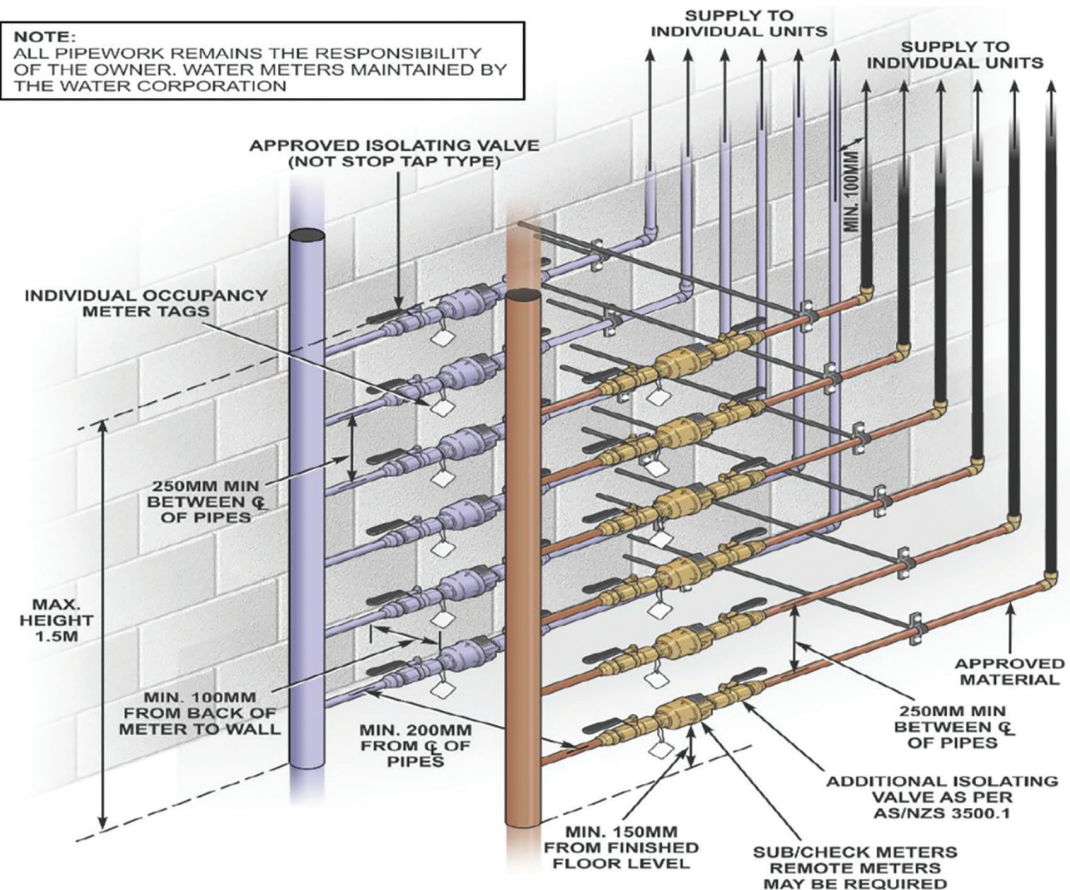
The following guidelines should be used in delivering the services for developments that have both a mandated recycled water connection and a rainwater system.

- Department of Health & Human Services - Rainwater use in urban communities. Guidelines for non-drinking applications in multi-residential, commercial and community facilities (2013)
- Victoria Building Authority - Technical Solution Sheet 91.02: Recycled Water (2015)
- Standards Australia - HB 230-2008: Rainwater tank design and installation handbook (2008)
- EPA Victoria - Dual Pipe Water Recycling Schemes - Health and Environmental Risk Management (2015)
- EPA Victoria - Guidelines for Environmental Management - Use of Reclaimed Water, Publication 464.2 (2003)



METERING

Metering must be delivered according to the Water Metering & Servicing Guidelines (2017).



STANDARDS

- Water Supply Code of Australia (WSA 03-2002, WSAA)
- AS/NZS 3500 National plumbing and drainage standards
- ATS 5200 Technical specification for plumbing and drainage products
- AS/NZS 2179 Specifications for rainwater goods, accessories, and fasteners
- AS 2845.1 Water Supply – Backflow Prevention Devices
- AS 1273 Unplasticised PVC (UPVC) downpipe and fittings for rainwater
- AS/NZS 4130 Polyethylene (PE) pipes for pressure applications
- AS/NZS 4766 Polyethylene storage tanks for water and chemicals.

MORE INFO

Contact your local water authority, local council contact (planner, drainage coordinator, building inspector)

Victorian Building Authority

Rainwater Harvesting Association of Australia

Stormwater Victoria